

# KIMZART—Art with Glass

## Glass Jewellery Hot from the Kiln

Hi Everyone

My first newsletter with some new vibrant glass pieces ready to be made into pendants or earrings.

I have been playing with some new glass called “spirit”. This glass is not metallic but has its own patterns and charm and is more subtle than the metallic dichroic.

Included are the dimensions of each piece of glass to give you some idea of its size . And if you don't want a rubber necklace I now have sterling silver necklaces in 16 or 18in. So if you prefer one of those instead of the rubber necklace they are an additional \$10.

Best Wishes Kim Szentivanyi



Vibrant Purple, blue and pink pendant.  
#10001-1. \$75

Interesting shape with great shades of purple and pink.

Size : L 5cm, W 2.75cm

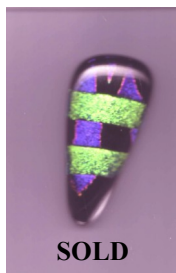


Silver, textured blue and purple pendant.  
#10001-2. \$70

Great oval shape with 3 panels of color, silver, blue and purple.

Size : L 4.25cm, W 2.25cm

SOLD



Purple marquis and lime green pendant.  
#10001-4. \$70

My favourite “chilli” shape with lime green stripes and purple & black patterns.

Size : L 4.5cm, W 2.5cm

SOLD



Blue texture glass and gold.  
#10002-1. \$70

My favourite “chilli” shape with a blue textured glass with a gold accent.

Size : L 5.0cm, W 2.5cm

SOLD

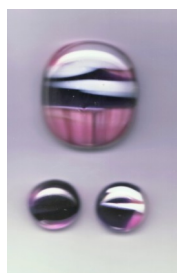


Teal and silver pendant.  
#10003-6. \$70

Textured teal glass with silver and gold highlights.

Size : L 3.5cm, W 3cm

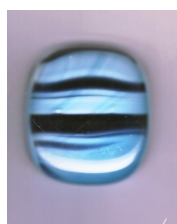
SOLD



Orchid opal and purple spirit pendant and earrings.  
#10005-1. \$70 for set.

Spirit” glass in pink, purple and white along with earrings.

Size : L 3.25cm, W 2.5cm



Aqua opal and black spirit pendant.  
#10003-2. \$60

Black, ivory and clear layered over deep aqua opal art glass.

Size : L 4.5cm, W 2.5cm

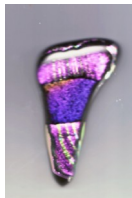


Vibrant purple and emerald pendant.  
#10003-4. \$60

Vibrant purple, black and emerald green stripe.

Size : L 4cm, W 2cm

Questions or comments or orders email Kim at [kim@kimzart.co.nz](mailto:kim@kimzart.co.nz)  
Or call 0274435115



# KIMZART—Art with Glass

## Hot from the Kiln cont.....



Gold & copper glass with blue spot accent pendant.  
#10002-5. \$70

Beautiful gold and copper dichroic glass with blue spot accent.

Size : L 3.75cm, W 3.25cm



Silver and lime pendant.  
#10004-5. \$70

Meant to be worn crosswise with glittering silver accented with lime dichroic.

Size : L 2.75cm, W 4cm



Red and gold on blue glass pendant.  
#10004-6. \$70

Red texture and spots layered on blue glass.

Size : L 3.5cm, W 3.5cm



Blue, copper, purple pendant.  
#10002-6. \$70

Chilli shape with 4 panels of color, purple, copper, blue and blue spot.

Size : L 4.5cm, W 2.25cm



Blue and pink pendant.  
#10001-3. \$75

Unique shape with the vibrant blue and pinks again..

Size : L 5.5cm, W 2.75cm



Blue/purple pendant.  
#10002-3. \$60

The wobbly shape again but in a blue that changes to purple depending on how you look at it.

Size : L 4.25cm, W 2cm



Gold, gold/orange and gold texture pendant.  
#10002-4. \$60

Textured gold glass with lines of orange gold and gold.

Size : L 3.5cm, W 2.5cm



Vibrant pink/purple pendant.  
#10003-3. \$60

Pink dichroic that turns purple from a different angle

Size : L 3.5cm, W 2cm



Multi color pendant with earrings.  
#10005-2. \$80 for set.

Gold, teal, pink rainbow all in this pendant and earring set.

Size : L 3.25cm, W 3.5cm



Teal, lime and pink dichroic pendant.  
#10004-2. \$60

Vibrant teal, lime, blue and pink glass.

Size : L 3cm, W 3cm

**Questions or comments or orders email Kim at [kim@kimzart.co.nz](mailto:kim@kimzart.co.nz) or call 0274 435115.**